

PalletStacking Dispatch Module

PalletStacking helps you to evaluate how many trucks or containers will you need for a specific delivery of SKUs.



PalletStacking Dispatch Module

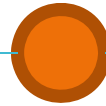
Reserved Rights P2016

PalletStacking guides you through the process to get which is the most efficient loading plan for your dispatches by truck or container.

SKUs dispatch plan



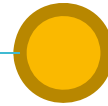
QTY units orders



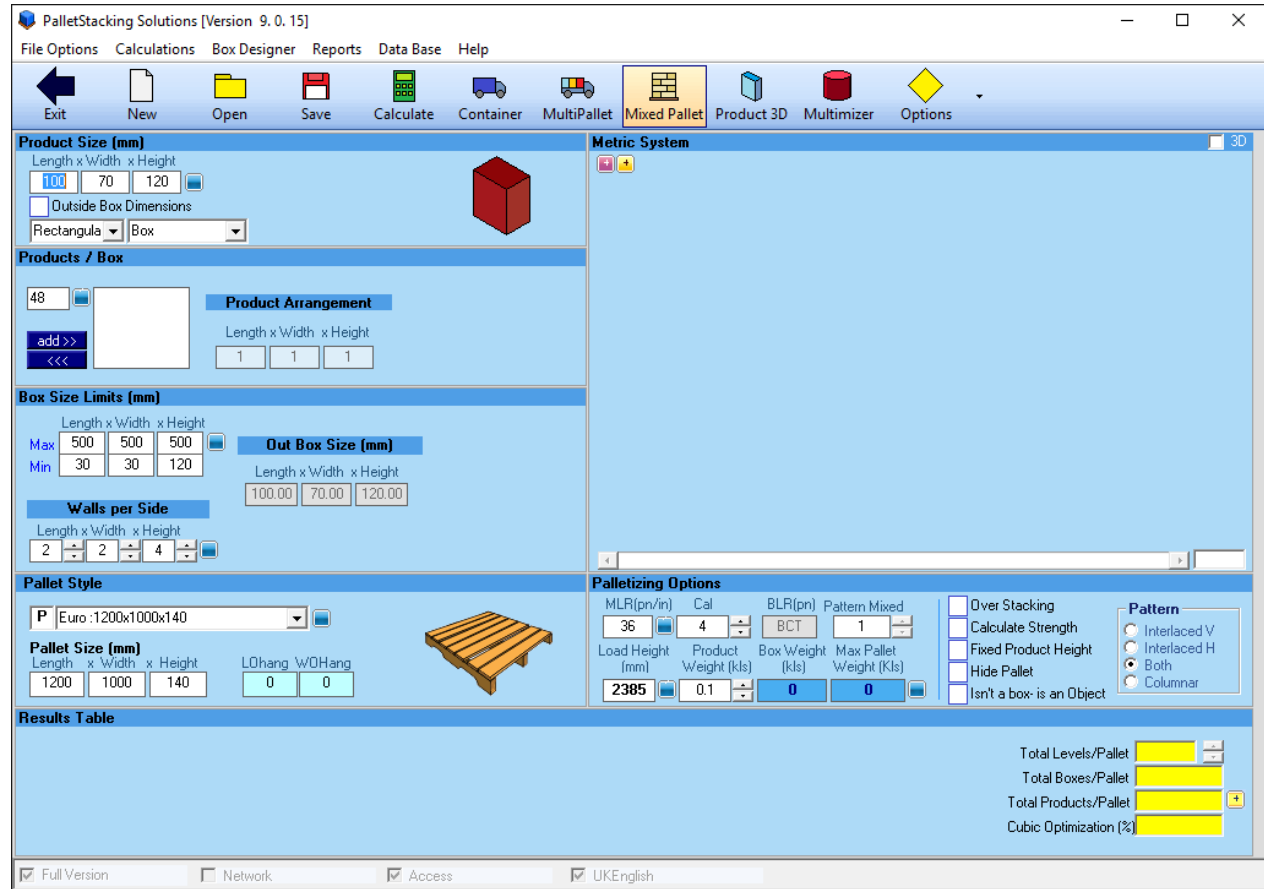
Containers required



PDF reports



Select the Mixed Pallet Module



Go to Dispatch menu

Mixed Module [Version 9.0.14]

File Options Calculations Reports Data Base Dispatch Help

Exit New Calculate % Set

Dispatch %Volumetric

Boxes/Shapes US Units System

Box_One

Standard Max Height: 93.8

Back to Front loading Show steps

Pallet Style

Length	x	Width	x	Height	Boxes/Pallet-Truck
48	x	40	x	6	

P Standard 1:48x40x6

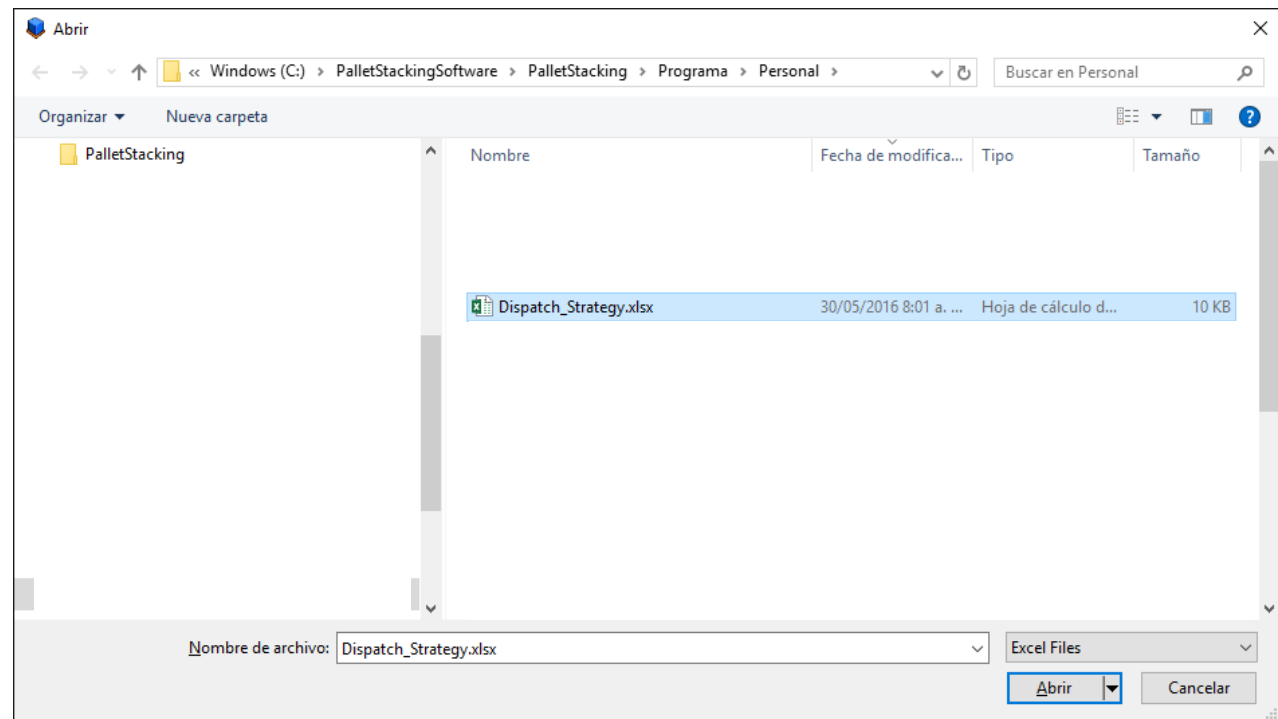
Total Weight

% Space occupancy

No.	Description	Length	Width	Depth	%Occupation	Items
1	Box_One	540	380	400		

Select your pre-prepared Excel file with the correct information for the dispatch

See next slide

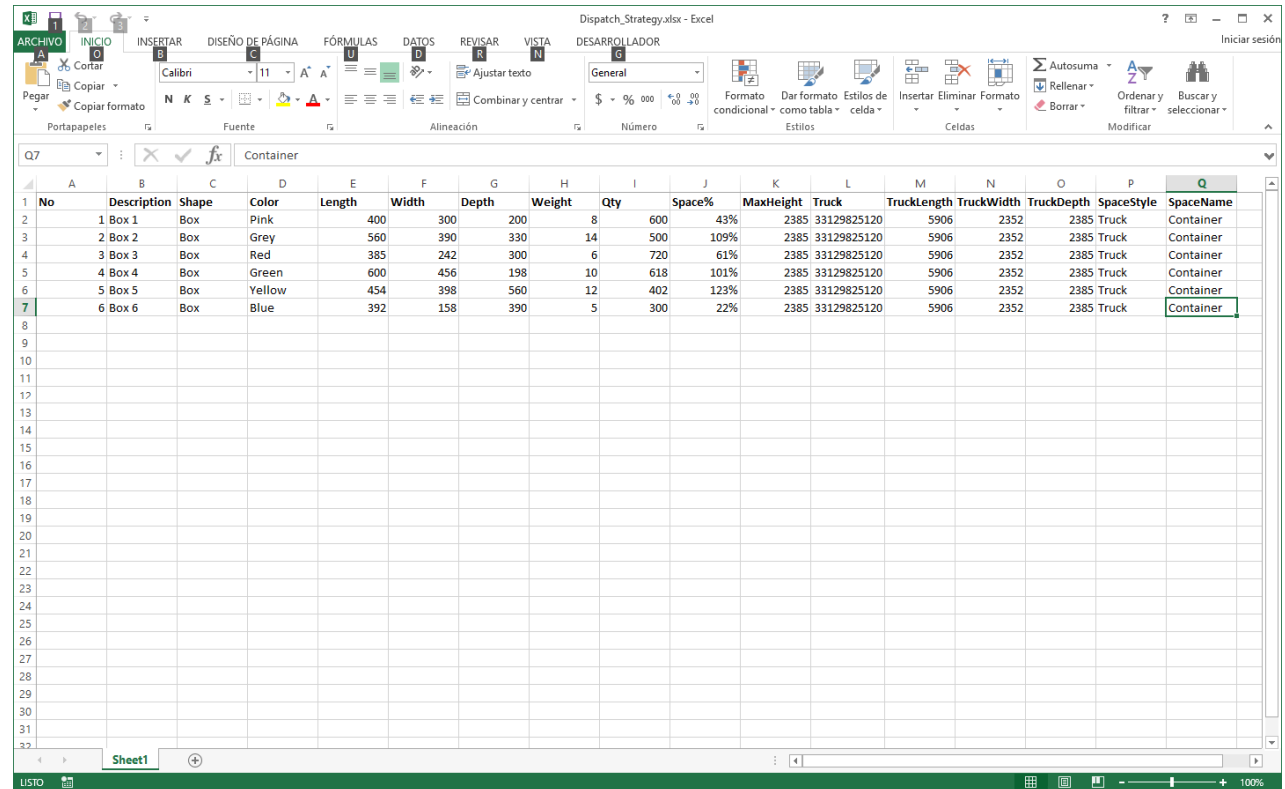


The Excel file must have this columns and type of information

Be sure you are entering correctly the data with the units system correctly (Metric or US units system)

To get an example of the Excel file, follow this link :

https://sites.google.com/a/palletstacking.com/www/get-your-file/Dispatch_Strategy.xlsx?attredirects=0&d=1



No	Description	Shape	Color	Length	Width	Depth	Weight	Qty	Space%	MaxHeight	Truck	TruckLength	TruckWidth	TruckDepth	SpaceStyle	SpaceName
1	Box 1	Box	Pink	400	300	200	200	8	600	43%	2385	33129825120	5906	2352	2385 Truck	Container
2	Box 2	Box	Grey	560	390	330	14	500	109%	2385	33129825120	5906	2352	2385 Truck	Container	
3	Box 3	Box	Red	385	242	300	6	720	61%	2385	33129825120	5906	2352	2385 Truck	Container	
4	Box 4	Box	Green	600	456	198	10	618	101%	2385	33129825120	5906	2352	2385 Truck	Container	
5	Box 5	Box	Yellow	454	398	560	12	402	123%	2385	33129825120	5906	2352	2385 Truck	Container	
6	Box 6	Box	Blue	392	158	390	5	300	22%	2385	33129825120	5906	2352	2385 Truck	Container	

...wait some seconds to let the software calculates the % for each of the SKUs

Mixed Module [Version 9.0.15]

File Options Calculations Reports Data Base Dispatch Help

Exit New Calculate % Setup Open Save Truck BLoad Dispatch %Volumetric

Boxes/Shapes

Box 1
Box 2
Box 3
Box 4
Box 5
Box 6

Standard Max Height: 2385

Back to Front loading Show steps

Pallet Style

Length x Width x Height
5906 2352 0.1

Boxes/Pallet-Truck: 300

Total Weight: 1500

% Space occupancy: 21.87

No.	Description	Length	Width	Depth	%Occupation	Items
1	Box 1	400	300	200	58	600
2	Box 2	560	390	330	119	500
3	Box 3	385	242	300	81	720
4	Box 4	600	456	198	116	618
5	Box 5	454	398	560	148	402

Select Dispatch module, and then Show balance strategy table

The screenshot shows the 'Mixed Module [Version 9.0.15]' software interface. The 'Dispatch' menu is open, and the 'Show Balance Strategy Table' option is highlighted with a red rectangle. Other menu options include 'Import Dispatch Strategy from Excel', 'Automatic Percentage calculation' (checked, Ctrl+A), and 'PDF Report' (Ctrl+T). The interface also features a 'Boxes/Shapes' panel on the left with six colored boxes (Box 1 to Box 6) and a 'Metric System' panel at the bottom right containing a table of box specifications and a 'Pallet Style' section.

Standard Max Height: 2385

Back to Front loading Show steps

Pallet Style

Length	x	Width	x	Height
5906		2352		0.1

Boxes/Pallet-Truck: **300**

Container: T

% Space occupancy: **21.87**

Total Weight: **1500**

No.	Description	Length	Width	Depth	%Occupation	Items
1	Box 1	400	300	200	58	600
2	Box 2	560	390	330	119	500
3	Box 3	385	242	300	81	720
4	Box 4	600	456	198	116	618
5	Box 5	454	398	560	148	402

The table will be shown below without any information

The click on the Calculate button

Mixed Module [Version 9.0.15]

File Options Calculations Reports Data Base Dispatch Help

Exit New Calculate % Setup Open Save Truck BLoad Dispatch %Volumetric

Boxes/Shapes

Box 1
Box 2
Box 3
Box 4
Box 5
Box 6

Metric System

Loading Table

Box	%

Standard max Height: 2300 pack to front loading show steps

Pallet Style

Length x Width x Height
5906 2352 0.1

Boxes/Pallet-Truck: 300

Total Weight: 1500

% Space occupancy: 21.87

No.	Description	Length	Width	Depth	%Occupation	Items
1	Box 1	400	300	200	58	600
2	Box 2	560	390	330	119	500
3	Box 3	385	242	300	81	720
4	Box 4	600	456	198	116	618
5	Box 5	454	398	560	148	402

The software will get the best dispatch strategy for you.

The order of the SKUs on the left side will be the priorities for the analysis calculation.

Mixed Module [Version 9.0.15]

File Options Calculations Reports Data Base Dispatch Help

Exit New Calculate % Setup Open Save Truck BLoad Dispatch %Volumetric

Boxes/Shapes

Box 1
Box 2
Box 3
Box 4
Box 5
Box 6

Metric System

Standard max Height: 2352 pack to prior loading show steps

Loading Table

Box	Analysis 1	Truck # 1	Truck # 2	Truck # 3	Truck # 4	Truck # 5	Truck # 6
Box 1	0	58	0	0	0	0	0
Box 2	0	42	77	0	0	0	0
Box 3	0	0	23	58	0	0	0
Box 4	0	0	0	42	74	0	0
Box 5	0	0	0	0	26	100	22
Box 6	0	0	0	0	0	0	32

Pallet Style

Length x Width x Height: 5906 x 2352 x 0.1

Boxes/Pallet-Truck: **360**

Total Weight: **2220**

% Space occupancy: **40.20**

No.	Description	Length	Width	Depth	%Occupation	Items
1	Box 1	400	300	200	58	600
2	Box 2	560	390	330	77	318
3	Box 3	385	242	300	58	489
4	Box 4	600	456	198	74	378
5	Box 5	454	398	560	22	60

After some second you will get a new window with the several trucks/containers required for the dispatch where you will see the best option plan for the boxes arrangement.

Dispatch layout

Options

- Box 1= 600
- Box 2= 500
- Box 3= 720
- Box 4= 618
- Box 5= 400
- Box 6= 300

Box	Space %	Qty
Box 1	58	600
Box 2	42	162

Box	Space %	Qty
Box 2	77	318
Box 3	23	231

Box	Space %	Qty
Box 3	58	489
Box 4	42	240

Dispatch layout

Options

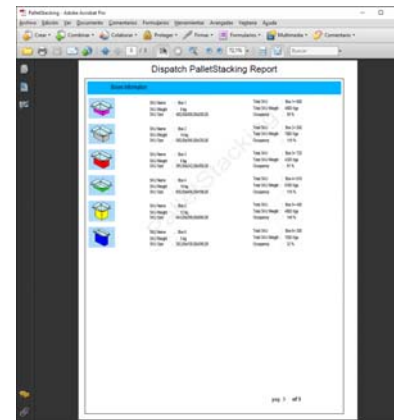
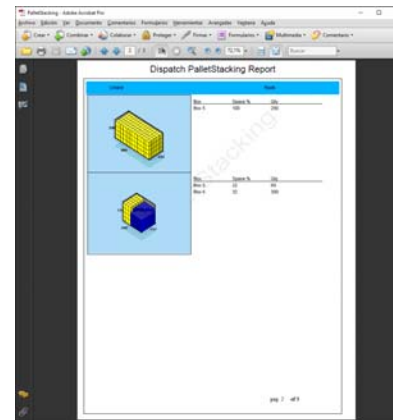
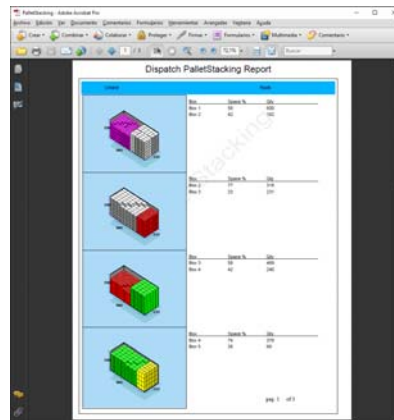
- Box 1= 600
- Box 2= 500
- Box 3= 720
- Box 4= 618
- Box 5= 400
- Box 6= 300

Box	Space %	Qty
Box 4	74	378
Box 5	26	60

Box	Space %	Qty
Box 5	100	280

Box	Space %	Qty
Box 5	22	60
Box 6	32	300

By selecting Options, and Print PDF report you will get the PDF file report



By clicking on the small Green button at the right side for each truck/container solution you will see enhanced the solution at the right side

Optional

Mixed Module [Version 9.0.15]

File Options Calculations Reports Data Base Dispatch Help

Exit New Calculate % Setup Open Save Truck BLoad Dispatch %Volumetric

Boxes/Shapes

↑

Box 1

Box 2

Box 3

Box 4

Box 5

Box 6

↓

6 Boxes

Metric System

Standard Max Height: 2385

Back to Front loading Show steps

Pallet Style

Length x Width x Height

5906 2352 0.1

Boxes/Pallet-Truck **782**

Total Weight **7348**

% Space occupancy **83.06**

No.	Description	Length	Width	Depth	%Occupation	Items
1	Box 1	400	300	200	58	600
2	Box 2	560	390	330	42	182
3	Box 3	385	242	300		
4	Box 4	600	456	198		
5	Box 5	454	398	560		